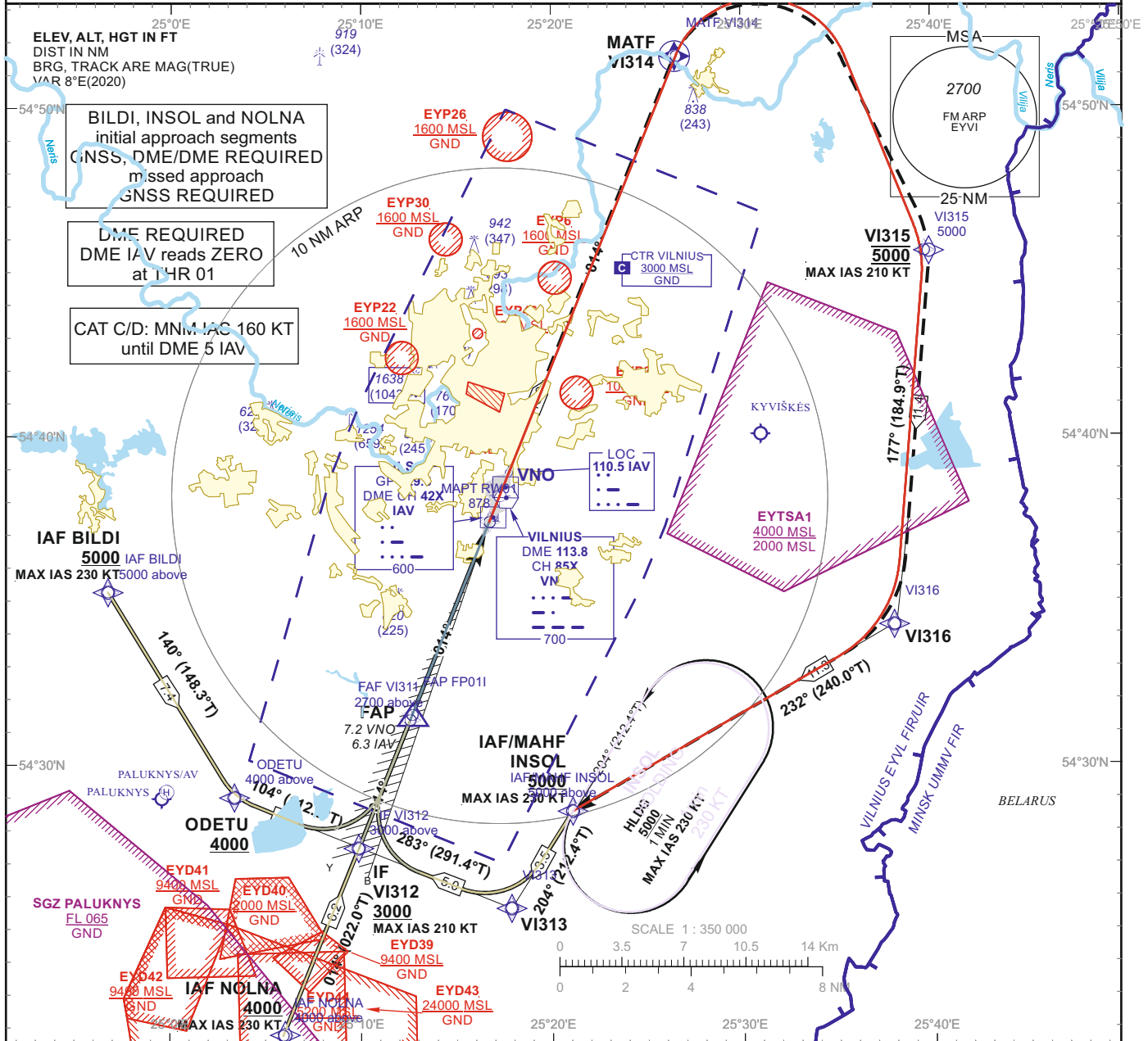


INSTRUMENT APPROACH CHART - ICAO

AERODROME ELEV 649
 HEIGHTS RELATED TO THR RWY 01 - ELEV 595

APP 120.705
 TWR 118.205
 ATIS 125.805

VILNIUS (EYVI) ILS CAT II Z RWY 01 (CAT A/B/C/D)



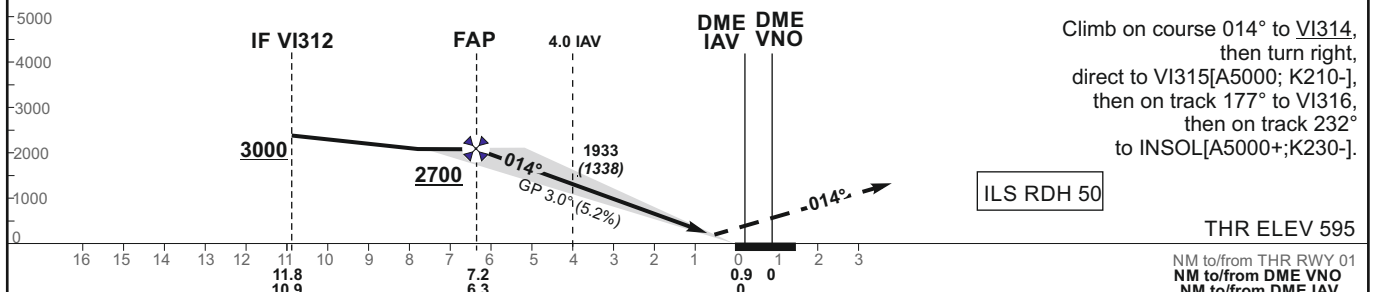
TRANSITION ALT 5000

MISSED APPROACH

Climb on course 014° to VI314, then turn right, direct to VI315[A5000; K210-], then on track 177° to VI316, then on track 232° to INSOL[A5000+;K230-].

ILS RDH 50

THR ELEV 595



OCA(OCH)	STRAIGHT-IN APPROACH	ILS CAT II				DIST DME IAV	MISSED APPROACH					
		A	B	C	D		6	5	4	3	2	
	ILS CAT II	746 (151)	764 (169)	775 (180)	790 (195)	Altitude	2590	2260	1940	1610	1290	
	ILS CAT I	844 (249)	856 (261)	865 (270)	875 (280)	Height	(1995)	(1665)	(1345)	(1015)	(695)	
CIRCLING		NOT AUTHORIZED										
		GS		Kts								
		FAP - THR 6.3 NM		min:sec								
		Rate of descent (5.2%)		ft/min								

For data tabulation see verso

Changes: EYP45 withdrawn; EYP46 added; ALT FM DME IAV; note.

**INSTRUMENT
APPROACH
CHART - ICAO****AERODROME ELEV 649**
HEIGHTS RELATED TO
THR RWY 01 - ELEV 595**VILNIUS (EYVI)
ILS CAT II Z RWY 01
(CAT A/B/C/D)****TABULAR DESCRIPTION**

IAF BILDI, INITIAL APPROACH											
Serial Number	Path Descriptor	Waypoint Identifier	Fly-over	Course/Track °M(°T)	Magnetic Variation	Distance (NM)/ Time	Turn Direction	Altitude (FT)/ Flight level	Speed (KT)	VPA/TCH	Navigation Specification
001	IF	BILDI	—	—	8.3	—	—	+5000	-230	—	RNAV 1
002	TF	ODETU	—	140(148.3)	8.3	7.4	—	+4000	—	—	RNAV 1
003	TF	VI312	—	104(112.3)	8.3	4.1	—	+3000	-210	—	RNAV 1
IAF INSOL, INITIAL APPROACH											
Serial Number	Path Descriptor	Waypoint Identifier	Fly-over	Course/Track °M(°T)	Magnetic Variation	Distance (NM)/ Time	Turn Direction	Altitude (FT)/ Flight level	Speed (KT)	VPA/TCH	Navigation Specification
001	IF	INSOL	—	—	8.3	—	—	+5000	-230	—	RNAV 1
002	TF	VI313	—	204(212.4)	8.3	3.5	—	—	—	—	RNAV 1
003	TF	VI312	—	283(291.4)	8.3	5.0	—	+3000	-210	—	RNAV 1
IAF NOLNA, INITIAL APPROACH											
Serial Number	Path Descriptor	Waypoint Identifier	Fly-over	Course/Track °M(°T)	Magnetic Variation	Distance (NM)/ Time	Turn Direction	Altitude (FT)/ Flight level	Speed (KT)	VPA/TCH	Navigation Specification
001	IF	NOLNA	—	—	8.3	—	—	+4000	-230	—	RNAV 1
002	TF	VI312	—	014(022.0)	8.3	6.2	—	+3000	-210	—	RNAV 1
MISSED APPROACH											
001	—	RW01	—	—	8.3	—	—	—	—	—	RNAV 1
002	CF	VI314	Y	014(022.0)	8.3	15.30	—	—	—	—	RNAV 1
003	DF	VI315	—	—	8.3	—	R	@5000	-210	—	RNAV 1
004	TF	VI316	—	177(184.9)	8.3	11.4	—	—	—	—	RNAV 1
005	TF	INSOL	—	232(240.0)	8.3	11.3	—	+5000	-230	—	RNAV 1
006	HM	INSOL	—	204(212.4)	8.3	1 min	L	+5000	-230	—	RNAV 1

FIX/POINTS	COORDINATES	FIX FORMATION
VNO	54 38 09.8N 025 17 37.1E	
INSOL (IAF/MAHF)	54 28 37.0N 025 21 03.5E	
BILDI (IAF)	54 35 16.4N 024 56 43.1E	
NOLNA (IAF)	54 21 46.6N 025 05 54.5E	
ODETU	54 29 01.7N 025 03 21.0E	
VI313	54 25 39.4N 025 17 49.9E	
VI312 (IF)	54 27 28.7N 025 09 51.3E	11.62 NM VNO ; BRG 013.66° / 10.73 NM IAV
FAP	54 31 32.7N 025 12 39.1E	7.23 NM VNO ; BRG 013.66° / 6.34 NM IAV
RW01	54 37 25.27N 025 16 42.70E	
VI314 (MATF)	54 51 35.4N 025 26 35.3E	
VI315	54 45 39.1N 025 39 36.6E	
VI316	54 34 16.1N 025 37 56.0E	
DME IAV	54 37 33.7N 025 16 55.8E	
LOC IAV	54 38 55.0N 025 17 44.9E	