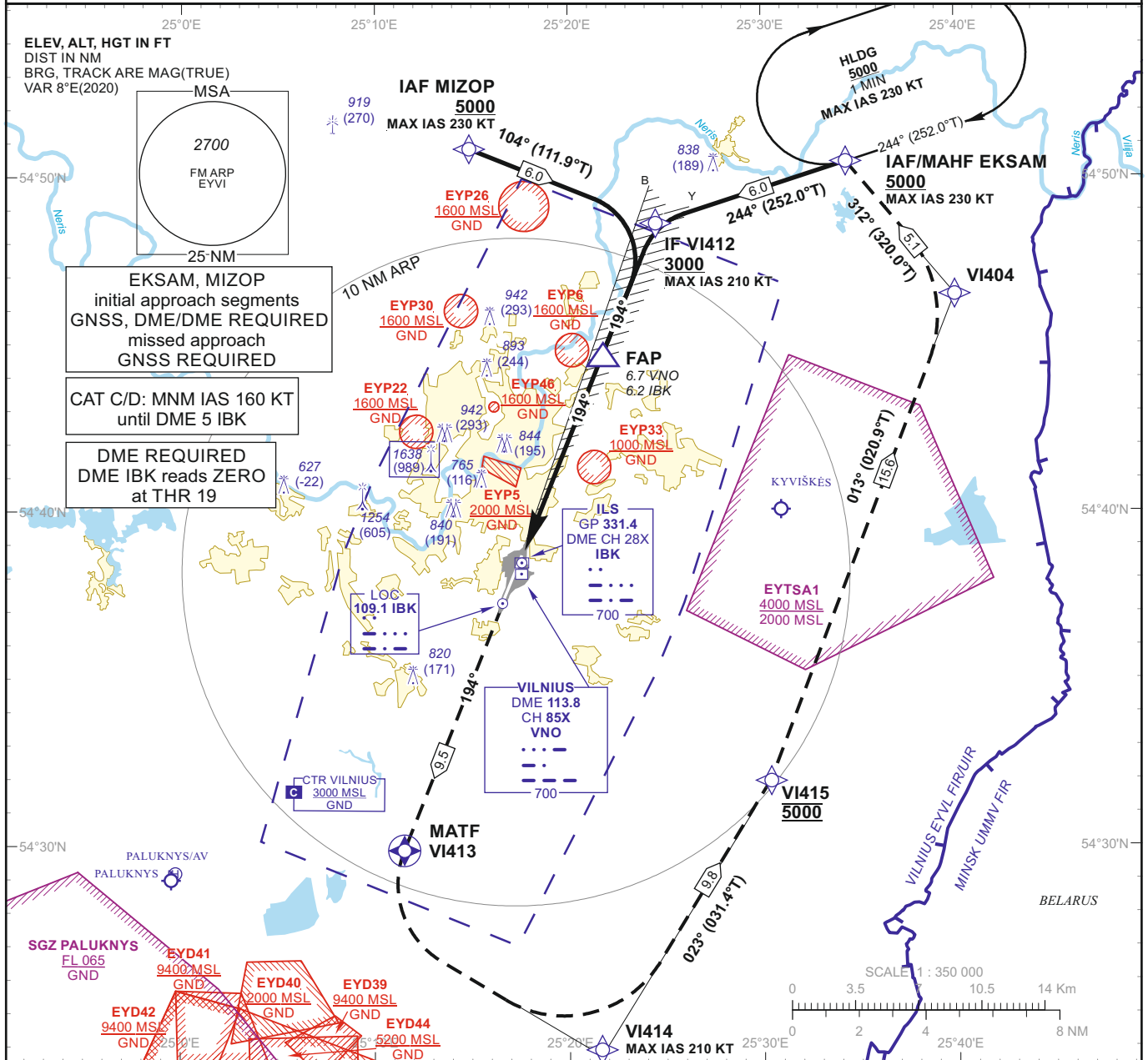


INSTRUMENT APPROACH CHART - ICAO

AERODROME ELEV 649
HEIGHTS RELATED TO THR RWY 19 - ELEV 649

APP 120.705
TWR 118.205
ATIS 125.805

VILNIUS (EYVI)
ILS Z RWY 19
(CAT A/B/C/D)



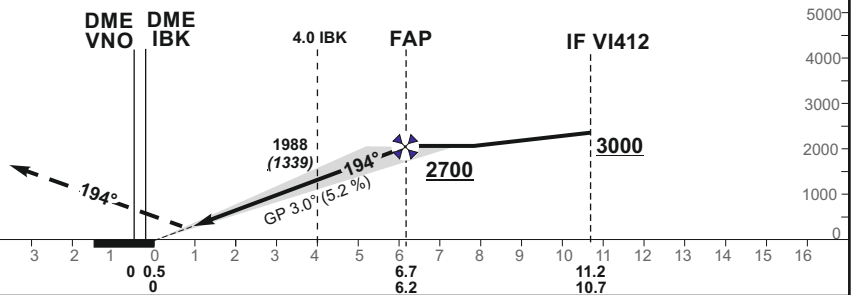
MISSED APPROACH

Climb on course 194° to VI413, then turn left, direct to VI414[K210-], then on track 023° to VI415[A5000], then on track 013° to VI404, then on track 312° to EKSAM[A5000+;K230-].

ILS RDH 51

THR ELEV 649

NM to/from THR RWY 19
NM to/from DME VNO
NM to/from DME IBK



TRANSITION ALT 5000

OCA(OCH)	A	B	C	D	DIST DME IBK	6	5	4	3	2			
STRAIGHT-IN APPROACH	ILS CAT I	917 (268)	930 (281)	938 (289)	948 (299)	Altitude	2650	2320	1990	1670	1340		
						Height	(2001)	(1671)	(1341)	(1021)	(691)		
CIRCLING	NOT AUTHORIZED												
						GS	Kts	80	100	120	140	160	180
						FAP - THR 6.2 NM	min:sec	4:39	3:43	3:06	2:39	2:20	2:04
						Rate of descent (5.2%)	ft/min	415	520	625	730	835	940

For data tabulation see verso

Changes: EYP45 withdrawn; EYP46 added; ALT FM DME IBK; note.

**INSTRUMENT
APPROACH
CHART - ICAO**
AERODROME ELEV 649
 HEIGHTS RELATED TO
 THR RWY 19 - ELEV 649

**VILNIUS (EYVI)
ILS Z RWY 19
(CAT A/B/C/D)**
TABULAR DESCRIPTION

Serial Number	Path Descriptor	Waypoint Identifier	Fly-over	Course/Track °M(°T)	Magnetic Variation	Distance (NM)/ Time	Turn Direction	Altitude (FT)/ Flight level	Speed (KT)	VPA/TCH	Navigation Specification
IAF EKSAM, INITIAL APPROACH											
001	IF	EKSAM	—	—	8.3	—	—	+5000	-230	—	RNAV 1
002	TF	VI412	—	244(252.0)	8.3	6.0	—	+3000	-210	—	RNAV 1
IAF MIZOP, INITIAL APPROACH											
001	IF	MIZOP	—	—	8.3	—	—	+5000	-230	—	RNAV 1
002	TF	VI412	—	104(111.9)	8.3	6.0	—	+3000	210	—	RNAV 1
MISSED APPROACH											
001	—	RW19	—	—	8.3	—	—	—	—	—	RNAV 1
002	CF	VI413	Y	194(201.8)	8.3	9.50	—	—	—	—	RNAV 1
003	DF	VI414	—	—	8.3	—	L	—	-210	—	RNAV 1
004	TF	VI415	—	023(031.5)	8.3	9.8	—	@5000	—	—	RNAV 1
005	TF	VI404	—	011(021.1)	8.3	15.6	—	—	—	—	RNAV 1
006	TF	EKSAM	—	312(320.0)	8.3	5.1	—	+5000	-230	—	RNAV 1
007	HM	EKSAM	—	244(252.0)	8.3	1 min	R	+5000	-230	—	RNAV 1

FIX/POINTS	COORDINATES	FIX FORMATION
VNO	54 38 09.8N 025 17 37.1E	
EKSAM (IAF/MAHF)	54 50 28.1N 025 34 22.5E	
MIZOP (IAF)	54 50 51.1N 025 14 52.6E	
VI412 (IF)	54 48 37.4N 025 24 30.6E	11.22 NM VNO ; BRG 193.64° / 10.74 NM IBK
FAP	54 44 24.0N 025 21 33.6E	6.65 NM VNO ; BRG 193.64° / 6.18 NM IBK
RW19	54 38 40.73N 025 17 34.99E	
VI413 (MATF)	54 29 52.5N 025 11 30.2E	
VI414	54 23 40.3N 025 21 37.7E	
VI415	54 32 01.1N 025 30 23.8E	
VI404	54 46 34.0N 025 40 02.2E	
LOC IBK	54 36 59.4N 025 16 24.8E	
DME IBK	54 38 29.0N 025 17 34.2E	