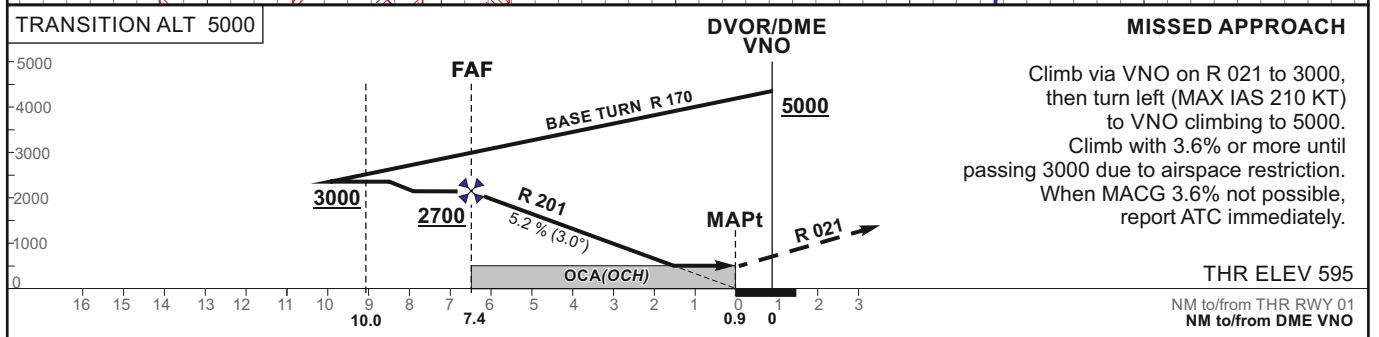
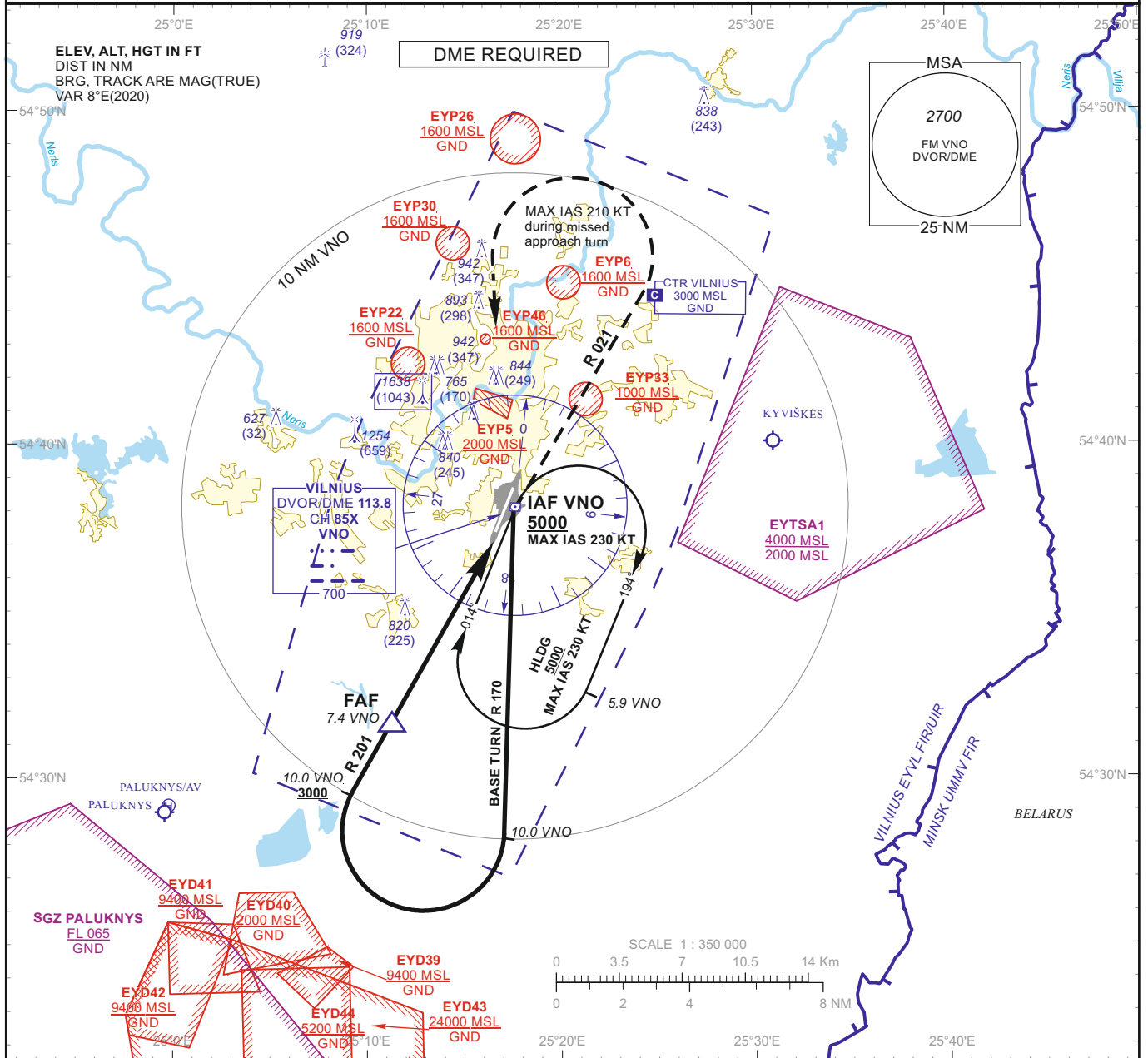


**INSTRUMENT APPROACH CHART - ICAO**

**AERODROME ELEV 649**  
 HEIGHTS RELATED TO  
 THR RWY 01 - ELEV 595

APP 120.705  
 TWR 118.205  
 ATIS 125.805

**VILNIUS (EYVI)**  
**VOR Y RWY 01**  
**(CAT C/D)**



**MISSED APPROACH**  
 Climb via VNO on R 021 to 3000, then turn left (MAX IAS 210 KT) to VNO climbing to 5000.  
 Climb with 3.6% or more until passing 3000 due to airspace restriction.  
 When MACG 3.6% not possible, report ATC immediately.

<b>OCA(OCH)</b>		<b>C</b>	<b>D</b>	<b>DIST DME VNO</b>	7	6	5	4	3		
<b>STRAIGHT-IN APPROACH</b>	<b>VOR</b>	<b>1060 (470)</b>		Altitude	2580	2270	1950	1630	1320		
				Height	(1985)	(1675)	(1355)	(1035)	(725)		
<b>CIRCLING</b>		NOT AUTHORIZED		Timing not authorized for defining the MAPt							
				GS	Kts	80	100	120	140	160	180
				FAF-MAPt 6.5 NM	min:sec	4:52	3:54	3:15	2:47	2:26	2:10
				Rate of descent (5.2%)	ft/min	415	520	625	730	835	940

For data tabulation see verso

Changes: EYP45 withdrawn; EYP46 added.

**INSTRUMENT  
APPROACH  
CHART - ICAO**
**AERODROME ELEV 649**  
 HEIGHTS RELATED TO  
 THR RWY 01 - ELEV 595

**VILNIUS (EYVI)  
VOR Y RWY 01  
(CAT C/D)**
**TABULAR DESCRIPTION**

VOR INSTRUMENT APPROACH from IAF(VNO)		
FIX/POINTS	COORDINATES	FIX FORMATION
VNO (IAF)	54 38 09.8N 025 17 37.1E	
FAF	54 31 41.5N 025 11 27.2E	BRG 020.75° / 7.41 NM VNO
MAPt	54 37 22.7N 025 16 52.1E	BRG 020.75° / 0.90 NM VNO
THR RWY 01	54 37 25.27N 025 16 42.70E	
Final approach descent angle: 3.00°		