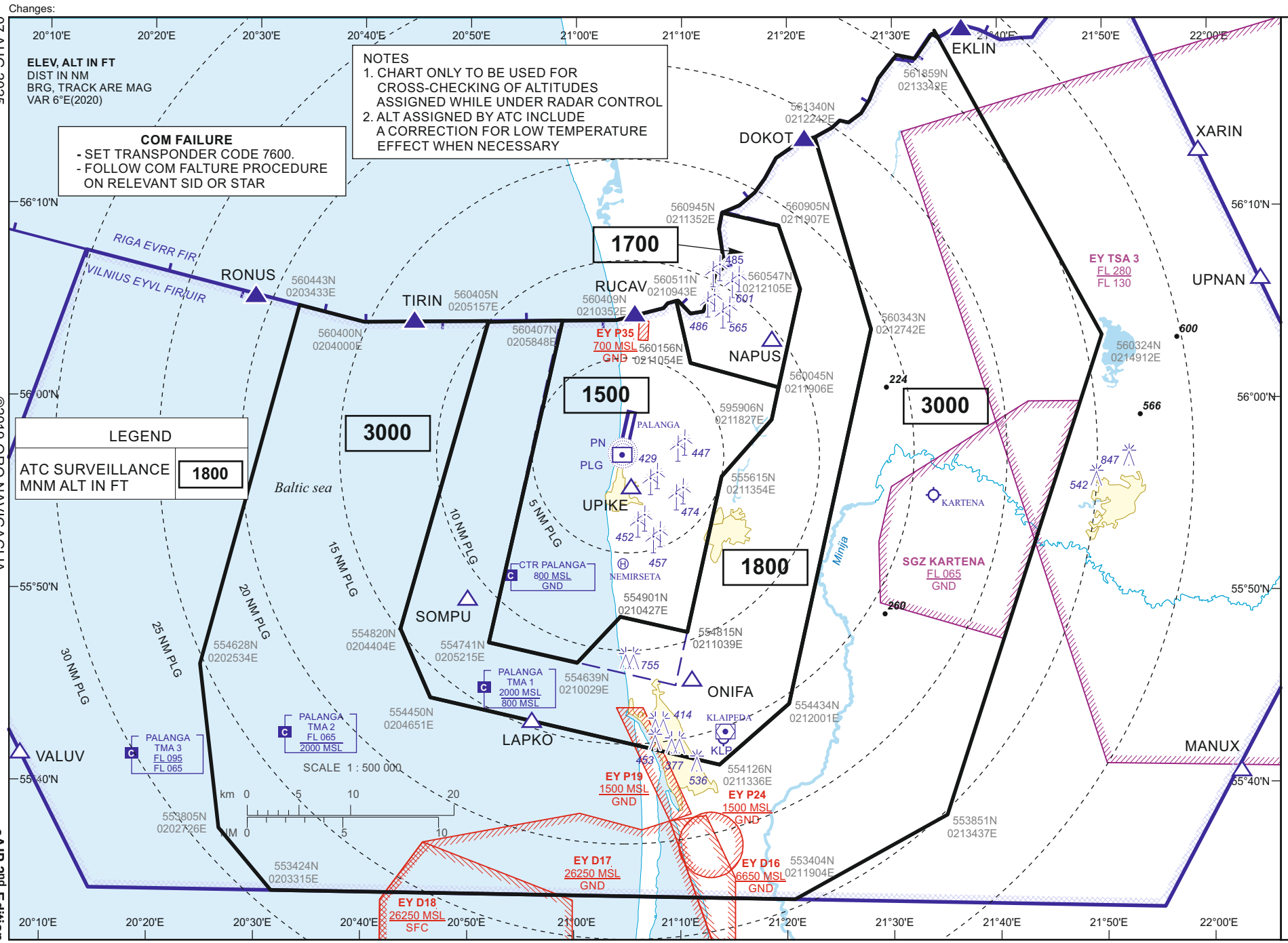


ATC SURVEILLANCE MINIMUM  
ALTITUDE CHART — ICAO

AERODROME ELEV 33  
TRANSITION ALT 5000

TWR 124.305  
118.305  
ATIS 127.805

PALANGA (EYPA)



Changes:  
07 AUG 2025

©2019 ORO NAVIGACIJA

eAIP 2nd Edition

ELEV, ALT IN FT  
DIST IN NM  
BRG, TRACK ARE MAG  
VAR 6°E(2020)

**NOTES**  
1. CHART ONLY TO BE USED FOR CROSS-CHECKING OF ALTITUDES ASSIGNED WHILE UNDER RADAR CONTROL  
2. ALT ASSIGNED BY ATC INCLUDE A CORRECTION FOR LOW TEMPERATURE EFFECT WHEN NECESSARY

**COM FAILURE**  
- SET TRANSPONDER CODE 7600.  
- FOLLOW COM FAILURE PROCEDURE ON RELEVANT SID OR STAR

**LEGEND**  
ATC SURVEILLANCE MNM ALT IN FT

**1800**

Baltic sea

SCALE 1 : 500 000

km 0 5 10 20  
NM 0 5 10 20

**NOTES**  
1. CHART ONLY TO BE USED FOR CROSS-CHECKING OF ALTITUDES ASSIGNED WHILE UNDER RADAR CONTROL  
2. ALT ASSIGNED BY ATC INCLUDE A CORRECTION FOR LOW TEMPERATURE EFFECT WHEN NECESSARY

**COM FAILURE**  
- SET TRANSPONDER CODE 7600.  
- FOLLOW COM FAILURE PROCEDURE ON RELEVANT SID OR STAR

**LEGEND**  
ATC SURVEILLANCE MNM ALT IN FT

**1800**

Baltic sea

SCALE 1 : 500 000

km 0 5 10 20  
NM 0 5 10 20

ATC SURVEILLANCE MINIMUM  
ALTITUDE CHART — ICAO

AERODROME ELEV 33  
TRANSITION ALT 5000

TWR 124.305  
118.305  
ATIS 127.805

PALANGA (EYPA)

SPECIALUSIS TUŠČIAS PUSLAPIS

*THIS PAGE INTENTIONALLY LEFT BLANK*