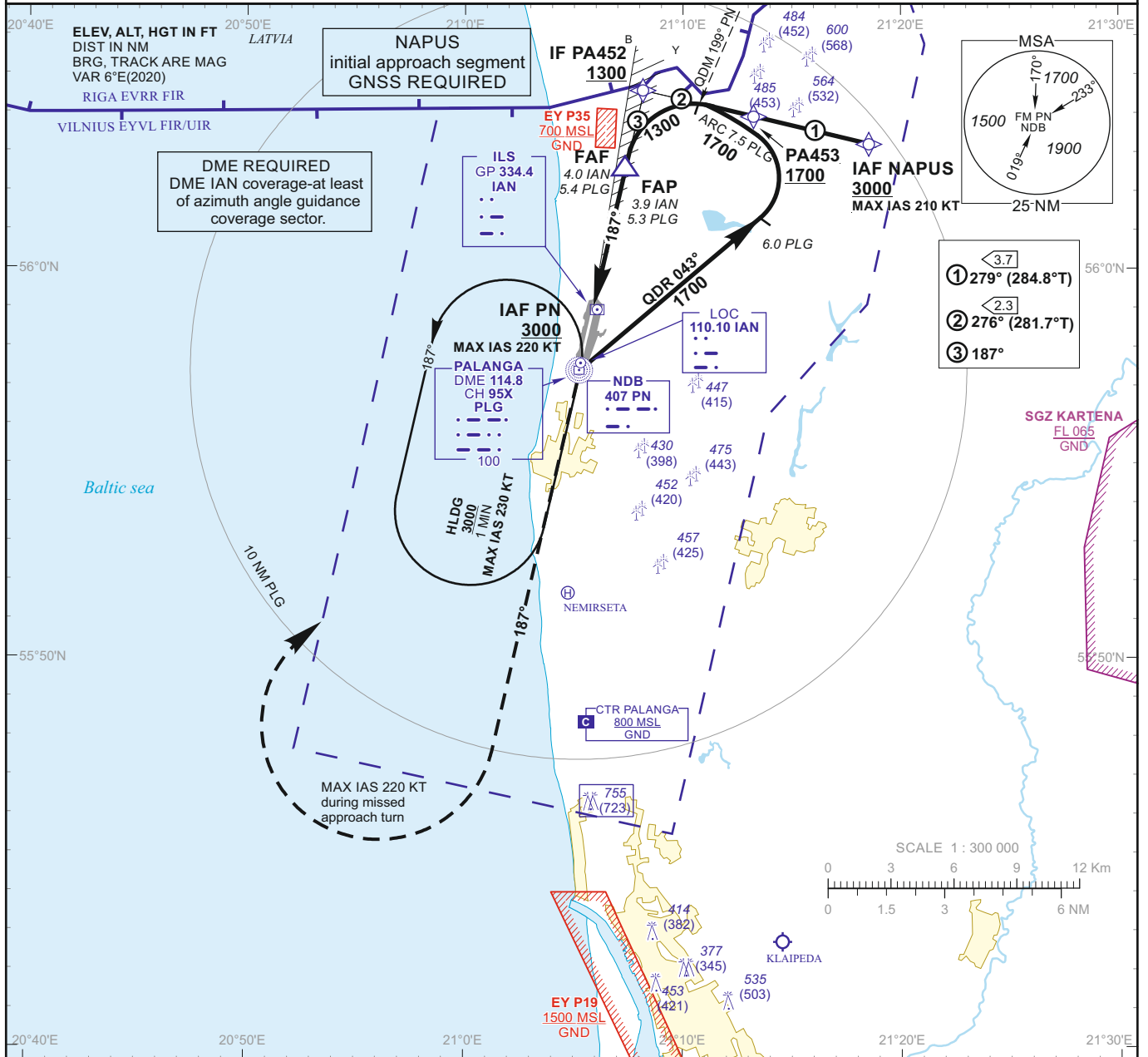


INSTRUMENT APPROACH CHART - ICAO

AERODROME ELEV 33
HEIGHTS RELATED TO
DTHR RWY 19 - ELEV 32

TWR 124.305
118.305
ATIS 127.805

PALANGA
ILS or LOC RWY 19
CAT (A/B/C/D)



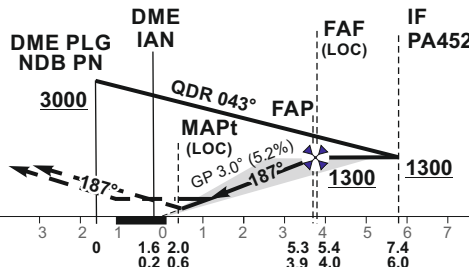
MISSED APPROACH

Climb on track 187° to 1900, then turn right (MAX IAS 220 KT), to PN climbing to 3000.

ILS RDH 54

DTHR ELEV 32

NM to/from DTHR RWY 19
NM to/from DME PLG
NM to/from DME IAN



OCA(OCH)	ILS CAT I	A	B	C	D	DIST DME IAN		3		2			
		287 (255)	299 (267)	307 (275)	317 (285)	Altitude	980	660	Height	(948)	(628)		
STRAIGHT-IN APPROACH	LOC	410 (380)				LOC : timing not authorized for defining the MAPt							
	CIRCLING	490 (450)	740 (710)	870 (840)	not authorized	GS	Kts	80	100	120	140	160	180
		FAF - MAPt 3.4 NM		min:sec		2:33	2:02	1:42	1:27	1:17	1:08		
		Rate of descent (5.2%)		ft/min		415	520	625	730	835	940		

For data tabulation see verso

Changes: scale; alternative channel added; obstacles: OCA(H); MAPt position; ALT on FAF, IAF PN.

**INSTRUMENT
APPROACH
CHART - ICAO**

AERODROME ELEV 33
HEIGHTS RELATED TO
DTHR RWY 19 - ELEV 32

PALANGA
ILS or LOC RWY 19
CAT (A/B/C/D)

TABULAR DESCRIPTION

IAF NAPUS, INITIAL APPROACH

Serial Number	Path Descriptor	Waypoint Identifier	Fly-over	Course/Track °M(°T)	Magnetic Variation	Distance (NM)/ Time	Turn Direction	Altitude (FT)/ Flight level	Speed (KT)	VPA/TCH	Navigation Specification
001	IF	NAPUS	—	—	5.9	—	—	+3000	-210	—	RVAV 1
002	TF	PA453	—	279(284.8)	5.9	3.7	—	+1700	—	—	RVAV 1
003	TF	PA452	—	276(281.7)	5.9	2.3	—	+1300	—	—	RVAV 1

ILS or LOC INSTRUMENT APPROACH from IAFs (PN, NAPUS)

FIX/POINTS	COORDINATES	FIX FORMATION
NAPUS (IAF)	56 03 12.1N 021 18 32.7E	BRG 226.10° PN ; 9.48 NM PLG
PN (IAF)	55 57 23.1N 021 05 13.5E	
PA453	56 04 08.3N 021 12 13.2E	BRG 204.20° PN ; 7.82 NM PLG
PA452 (IF)	56 04 36.6N 021 08 08.6E	BRG 186.85° / 6.03 NM IAN ; 7.42 NM PLG
FAF	56 02 39.7N 021 07 21.2E	BRG 186.85° / 4.02 NM IAN ; 5.41 NM PLG
FAP	56 02 34.8N 021 07 19.2E	BRG 186.85° / 3.94 NM IAN ; 5.33 NM PLG
MAPt	55 59 17.7N 021 05 59.7E	BRG 186.85° / 0.57 NM IAN ; 1.96 NM PLG
DTHR RWY 19	55 58 54.36N 021 05 50.27E	
DME PLG	55 57 23.5N 021 05 13.4E	
DME IAN	55 58 43.8N 021 05 53.7E	
LOC IAN	55 57 35.8N 021 05 18.6E	
Final approach (LOC) descent angle: 3.00°		