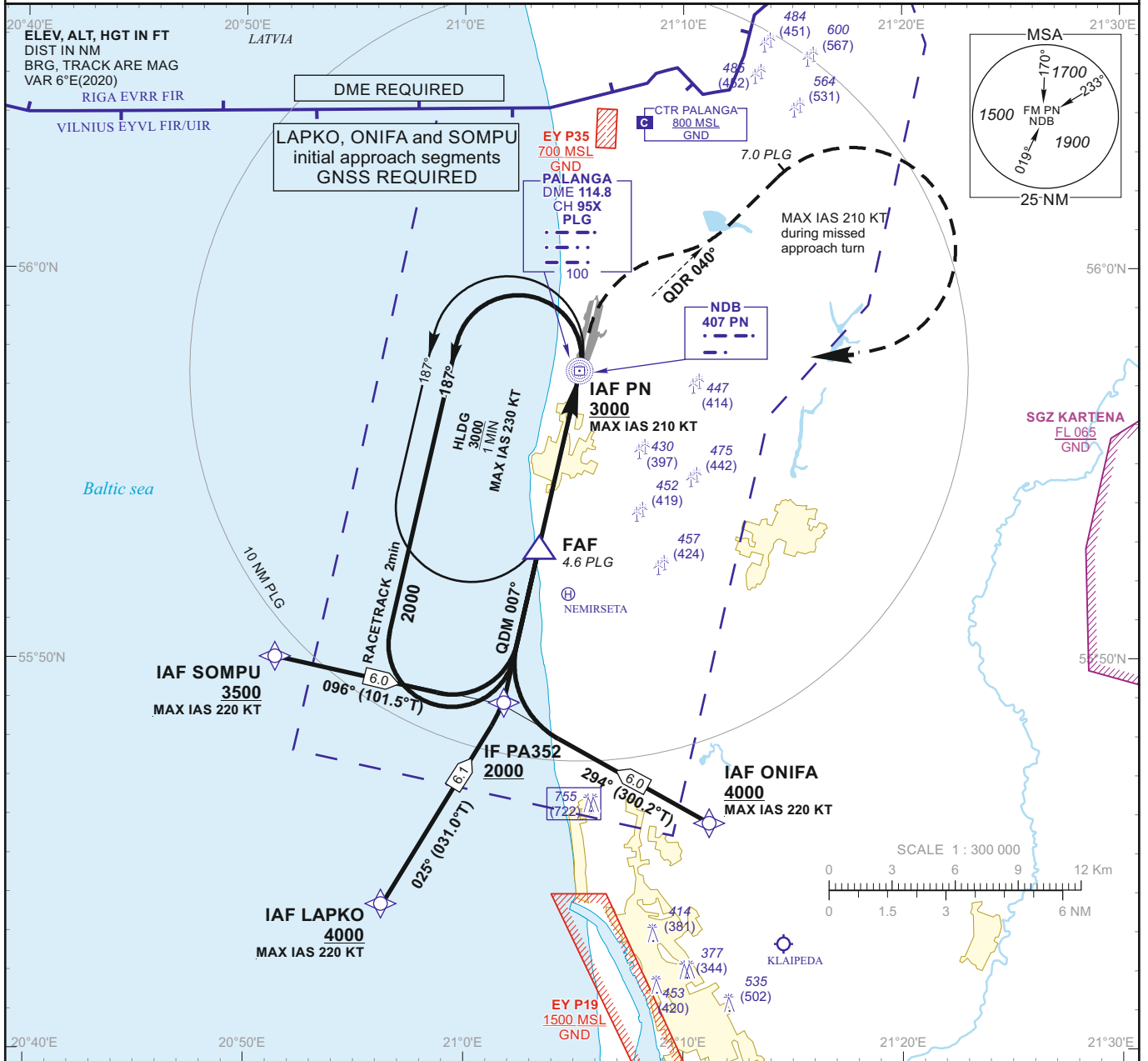


INSTRUMENT APPROACH CHART - ICAO

AERODROME ELEV 33
 HEIGHTS RELATED TO AD ELEV
 DTHR RWY 01 - ELEV 33

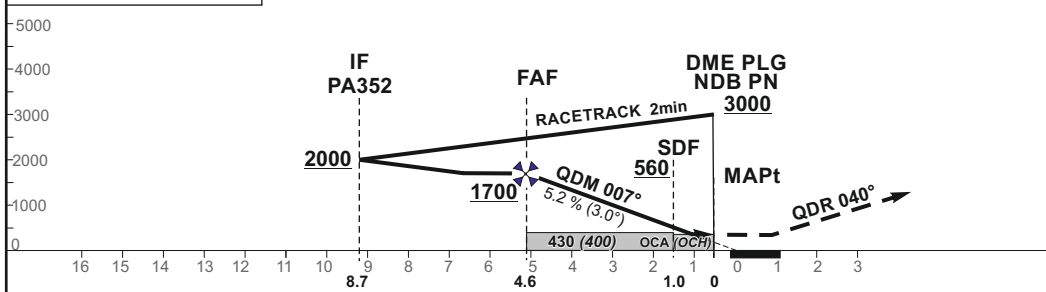
TWR 124.305
 ATIS 118.305
 127.805

PALANGA NDB Y RWY 01 (CAT C/D)



Changes: scale; alternative channel added; obstacles: OCA(H); ALT on FAF, SDF and IAF PN.

TRANSITION ALT 5000



MISSED APPROACH
 Climb on QDR 040° PN.
 AT 7.0 DME PLG turn right (MAX IAS 210 KT) to PN climbing to 3000.
 Climb with 3.5% or more until crossing 7.0 DME PLG, due to airspace structure.

DTHR ELEV 33
 NM to/from DTHR RWY 01
 NM to/from DME PLG

OCA(OCH)		C		D	DIST DME PLG							
		4	3	2	1	4	3	2	1			
STRAIGHT-IN APPROACH	NDB	420 (390)			Altitude	1500	1190	870	560			
	NDB (when SDF not received)	430 (400)			Height	(1467)	(1157)	(837)	(527)			
CIRCLING		870 (840)		not authorized	Timing not authorized for defining the MAPt							
					GS	Kts	80	100	120	140	160	180
					FAF - MAPt 4.6 NM	min:sec	3:00	2:44	2:00	1:43	1:30	1:20
					Rate of descent (5.2%)	ft/min	415	520	625	730	835	940

For data tabulation see verso

**INSTRUMENT
APPROACH
CHART - ICAO**

AERODROME ELEV 33
HEIGHTS RELATED TO AD ELEV
DTHR RWY 01 - ELEV 33

TWR 124.305
ATIS 127.805

**PALANGA
NDB Y RWY 01
(CAT C/D)**

TABULAR DESCRIPTION

IAF LAPKO, INITIAL APPROACH

Serial Number	Path Descriptor	Waypoint Identifier	Fly-over	Course/Track °M(°T)	Magnetic Variation	Distance (NM)/ Time	Turn Direction	Altitude (FT)/ Flight level	Speed (KT)	VPA/TCH	Navigation Specification
001	IF	LAPKO	—	—	-5.9	—	—	+4000	-220	—	RNAV 1
002	TF	PA352	—	025(031.0)	-5.9	6.1	—	+2000	—	—	RNAV 1

IAF ONIFA, INITIAL APPROACH

Serial Number	Path Descriptor	Waypoint Identifier	Fly-over	Course/Track °M(°T)	Magnetic Variation	Distance (NM)/ Time	Turn Direction	Altitude (FT)/ Flight level	Speed (KT)	VPA/TCH	Navigation Specification
001	IF	ONIFA	—	—	-5.9	—	—	+4000	-220	—	RNAV 1
002	TF	PA352	—	294(300.2)	-5.9	6.0	—	+2000	—	—	RNAV 1

IAF SOMPU, INITIAL APPROACH

Serial Number	Path Descriptor	Waypoint Identifier	Fly-over	Course/Track °M(°T)	Magnetic Variation	Distance (NM)/ Time	Turn Direction	Altitude (FT)/ Flight level	Speed (KT)	VPA/TCH	Navigation Specification
001	IF	SOMPU	—	—	-5.9	—	—	+3500	-220	—	RNAV 1
002	TF	PA352	—	096(101.5)	-5.9	6.0	—	+2000	—	—	RNAV 1

NDB INSTRUMENT APPROACH from IAFs(PN, LAPKO, ONIFA, SOMPU)

FIX/POINTS	COORDINATES	FIX FORMATION
LAPKO (IAF)	55 43 39.9N 020 56 15.3E	BRG 014.38° PN ; 14.65 NM PLG
ONIFA (IAF)	55 45 51.4N 021 11 02.4E	BRG 338.24° PN ; 12.01 NM PLG
SOMPU (IAF)	55 50 04.5N 020 51 23.2E	BRG 040.98° PN ; 10.70 NM PLG
PA352 (IF)	55 48 53.5N 021 01 49.1E	BRG 006.85° PN ; 8.73 NM PLG
FAF	55 52 52.8N 021 03 24.9E	BRG 006.85° PN ; 4.63 NM PLG
SDF	55 56 24.9N 021 04 50.1E	BRG 006.85° PN ; 1.00 NM PLG
PN (MAPt, IAF)	55 57 23.1N 021 05 13.5E	
DTHR RWY 01	55 57 51.93N 021 05 25.11E	
DME PLG	55 57 23.5N 021 05 13.4E	
Final approach descent angle: 3.00°		

Changes: