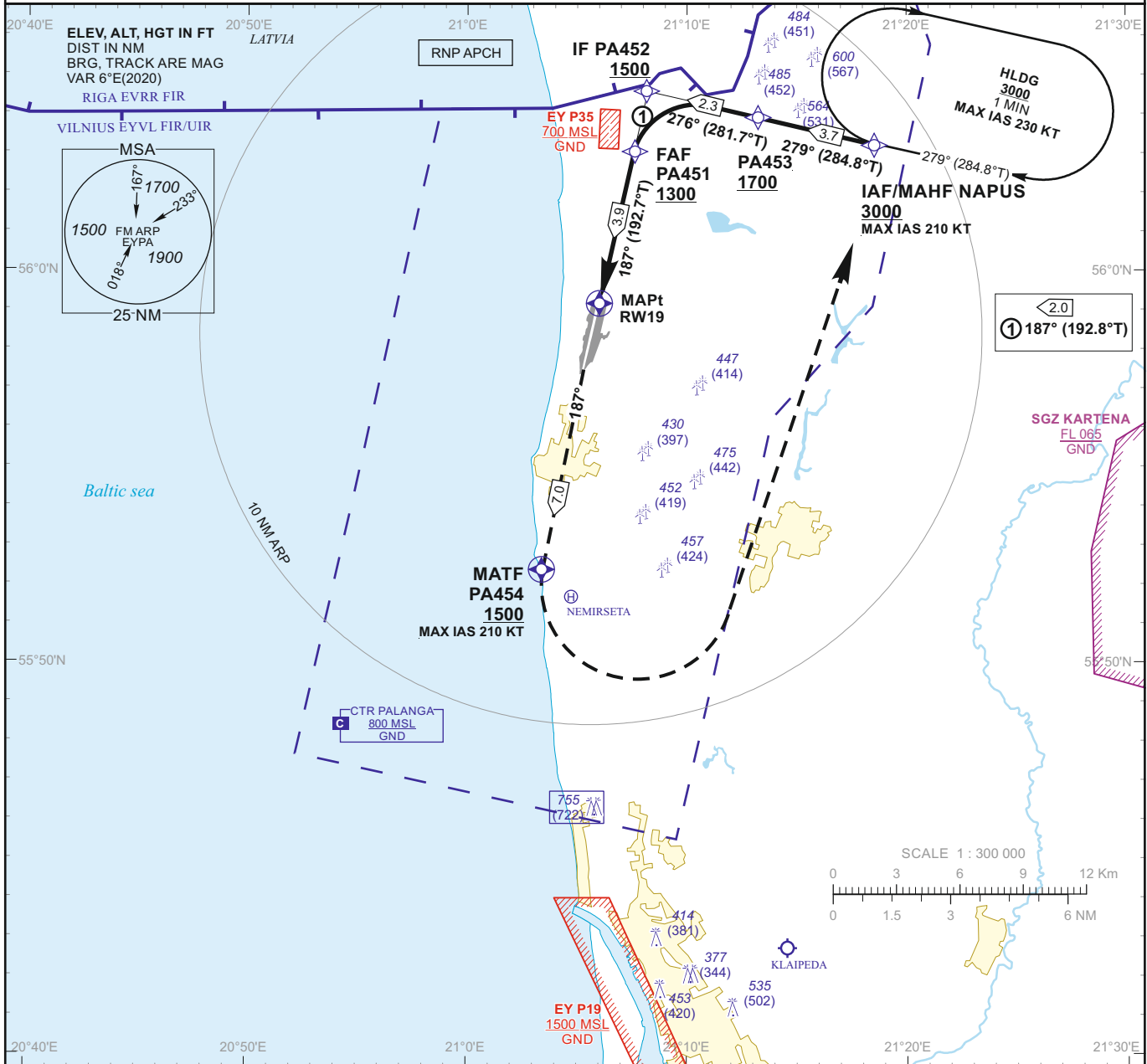


INSTRUMENT APPROACH CHART - ICAO

AERODROME ELEV 33
 HEIGHTS RELATED TO AD ELEV
 DTHR RWY 19 - ELEV 32

TWR 124.305
 118.305
 ATIS 127.805

PALANGA RNP (LNAV only) RWY 19 (CAT A/B/C/D)



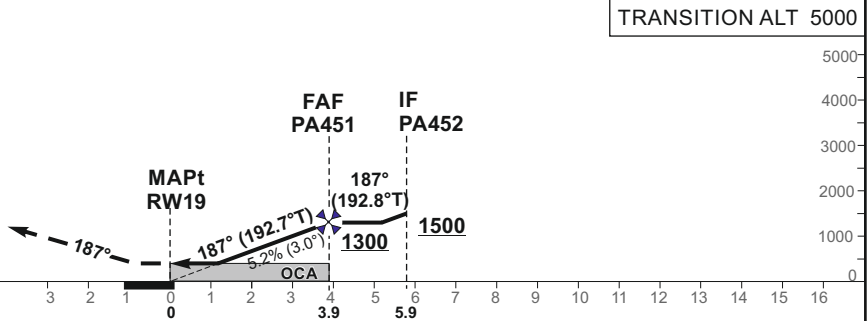
MISSED APPROACH

Climb on course 187° to PA454 [A1500+], then turn left [K210-], direct to NAPUS climbing to 3000.

TCH 50

DTHR ELEV 32

NM to/from DTHR RWY 19
 NM to/from DTHR RWY 19



OCA(OCH)	LNAV	DIST TO RWY19				Altitude		Timing not authorized for defining the MAPt								
		A	B	C	D	3	2	GS	Kts	80	100	120	140	160	180	
STRAIGHT-IN APPROACH		420 (390)				1030	720	FAF-MAPt	3.9 NM	min:sec	2:55	2:20	1:57	1:40	1:28	1:18
CIRCLING		490 (450)	740 (710)	870 (840)	not authorized			Rate of descent (5.2%)	ft/min	415	520	625	730	835	940	

For data tabulation see verso

Changes: scale; alternative channel added; obstacles: OCA(H); ALT on PA451.

**INSTRUMENT
APPROACH
CHART - ICAO**

AERODROME ELEV 33
HEIGHTS RELATED TO AD ELEV
DTHR RWY 19 - ELEV 32

PALANGA
RNP (LNAV only) RWY 19
(CAT A/B/C/D)

TABULAR DESCRIPTION

IAF NAPUS											
Serial Number	Path Descriptor	Waypoint Identifier	Fly-over	Course/Track °M(°T)	Magnetic Variation	Distance (NM)/ Time	Turn Direction	Altitude (FT)/ Flight level	Speed (KT)	VPA/TCH	Navigation Specification
001	IF	NAPUS	—	—	5.9	—	—	+3000	-210	—	RNP APCH
002	TF	PA453	—	279(284.8)	5.9	3.7	—	+1700	—	—	RNP APCH
003	TF	PA452	—	276(281.7)	5.9	2.3	—	+1500	—	—	RNP APCH
004	TF	PA451	—	187(192.8)	5.9	2.0	—	+1300	—	—	RNP APCH
005	TF	RW19	Y	187(192.7)	5.9	3.9	—	@420	—	-3.00/50	RNP APCH
006	CF	PA454	Y	187(192.7)	5.9	7.0	—	+1500	-210	—	RNP APCH
007	DF	NAPUS	—	—	5.9	—	L	+3000	-210	—	RNP APCH
008	HM	NAPUS	—	279(284.8)	5.9	1 min	R	+3000	-230	—	RNAV 1

FIX/POINTS	COORDINATES
NAPUS (IAF/MAHF)	56 03 12.1N 021 18 32.7E
PA453	56 04 08.3N 021 12 13.2E
PA452 (IF)	56 04 36.6N 021 08 08.6E
PA451 (FAF)	56 02 39.6N 021 07 21.2E
RW19 (MAPt)	55 58 54.36N 021 05 50.27E
PA454 (MATF)	55 52 05.5N 021 03 05.9E