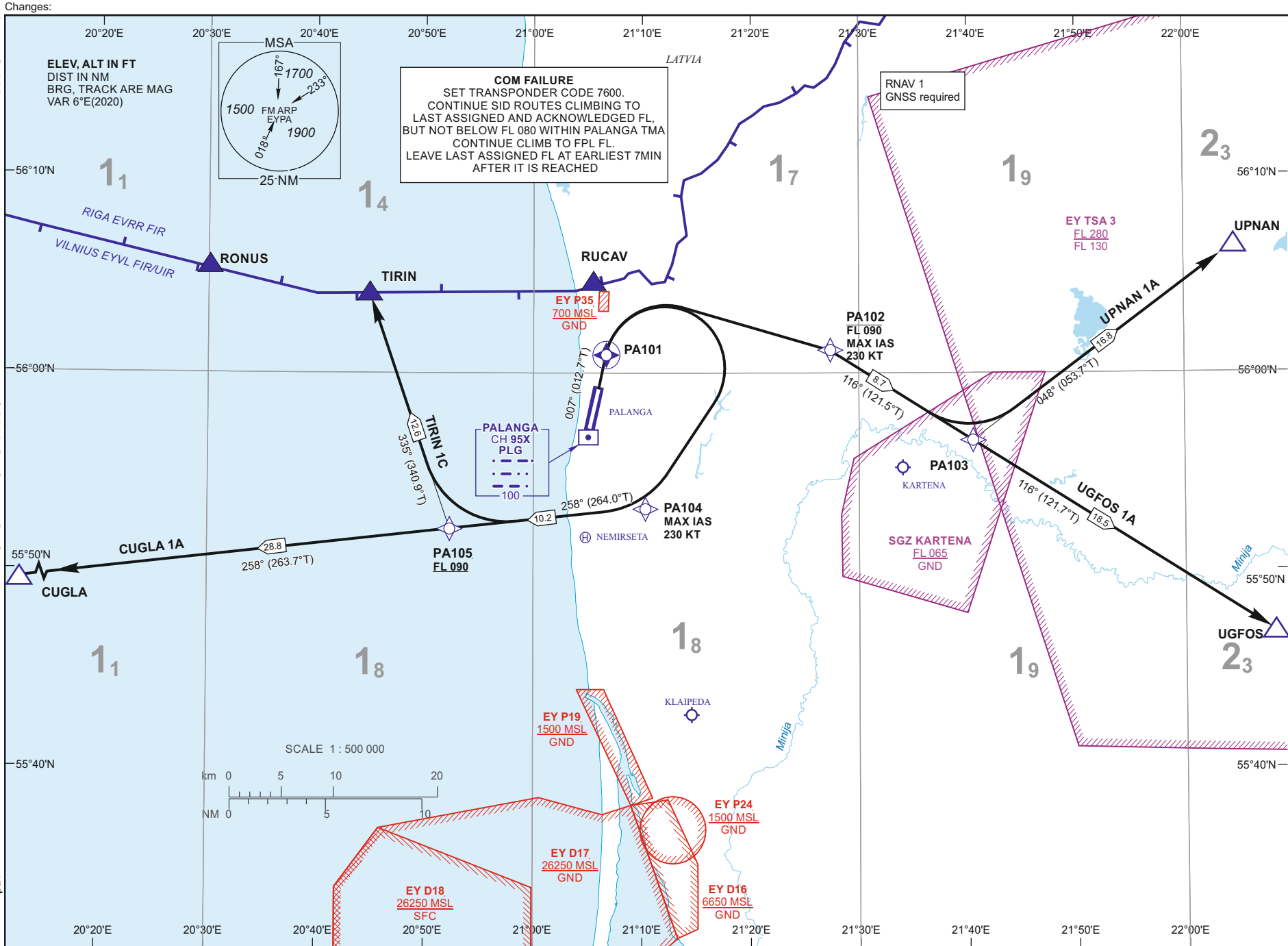


STANDARD DEPARTURE CHART  
INSTRUMENT (SID) - ICAO

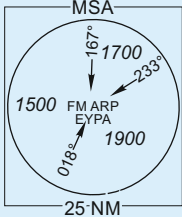
TRANSITION ALT  
5000

TWR 124.305  
118.305  
ATIS 127.805

PALANGA (EYPA)  
RNAV RMY 01  
CUGLA 1A, TIRIN 1C,  
UGFOS 1A, UPNAN 1A



ELEV, ALT IN FT  
DIST IN NM  
BRG, TRACK ARE MAG  
VAR 6°E(2020)



Changes:

07 AUG 2025

©2019 ORO NAVIGACIJA

eAIP 2nd Edition

**STANDARD DEPARTURE CHART  
INSTRUMENT (SID) - ICAO**TRANSITION ALT  
5000**PALANGA (EYPA)  
RNAV RWY 01**  
CUGLA 1A, TIRIN 1C,  
UGFOS 1A, UPNAN 1A

## TABULAR DESCRIPTION

**CUGLA 1A** PDG 7.7% REQUIRED DUE TO OPERATIONAL REASONS UNTIL PA101

Serial Number	Path Descriptor	Waypoint Identifier	Fly-over	Course/Track °M(°T)	Magnetic Variation	Distance (NM)	Turn Direction	Altitude (FT)/ Flight level	Speed (KT)	Navigation Specification
001	CF	PA101	Y	007(012.7)	5.9	2.0	—	—	—	RNAV1
002	DF	PA104	—	—	5.9	—	R	—	-230	RNAV1
003	TF	PA105	—	258(264.0)	5.9	10.2	—	+FL090	—	RNAV1
004	TF	CUGLA	—	258(263.7)	5.9	28.8	—	—	—	RNAV1

**TIRIN 1C** PDG 7.7% REQUIRED DUE TO OPERATIONAL REASONS UNTIL PA101

Serial Number	Path Descriptor	Waypoint Identifier	Fly-over	Course/Track °M(°T)	Magnetic Variation	Distance (NM)	Turn Direction	Altitude (FT)/ Flight level	Speed (KT)	Navigation Specification
001	CF	PA101	Y	007(012.7)	5.9	2.0	—	—	—	RNAV1
002	DF	PA104	—	—	5.9	—	R	—	-230	RNAV1
003	TF	PA105	—	258(264.0)	5.9	10.2	—	+FL090	—	RNAV1
004	TF	TIRIN	—	335(340.9)	5.9	12.6	—	—	—	RNAV1

**UGFOS 1A** PDG 7.7% REQUIRED DUE TO OPERATIONAL REASONS UNTIL PA101

Serial Number	Path Descriptor	Waypoint Identifier	Fly-over	Course/Track °M(°T)	Magnetic Variation	Distance (NM)	Turn Direction	Altitude (FT)/ Flight level	Speed (KT)	Navigation Specification
001	CF	PA101	Y	007(012.7)	5.9	2.0	—	—	—	RNAV1
002	DF	PA102	—	—	5.9	—	R	-FL090	-230	RNAV1
003	TF	PA103	—	116(121.5)	5.9	8.7	—	—	—	RNAV1
004	TF	UGFOS	—	116(121.7)	5.9	18.5	—	—	—	RNAV1

**UPNAN 1A** PDG 7.7% REQUIRED DUE TO OPERATIONAL REASONS UNTIL PA101

Serial Number	Path Descriptor	Waypoint Identifier	Fly-over	Course/Track °M(°T)	Magnetic Variation	Distance (NM)	Turn Direction	Altitude (FT)/ Flight level	Speed (KT)	Navigation Specification
001	CF	PA101	Y	007(012.7)	5.9	2.0	—	—	—	RNAV1
002	DF	PA102	—	—	5.9	—	R	-FL090	-230	RNAV1
003	TF	PA103	—	116(121.5)	5.9	8.7	—	—	—	RNAV1
004	TF	UPNAN	—	048(053.7)	5.9	16.8	—	—	—	RNAV1

**WAYPOINT COORDINATES**

FIX/POINTS	COORDINATES	FIX/POINTS	COORDINATES
PA101	56 00 55.9N 021 06 39.3E	CUGLA	55 48 48.6N 020 01 29.9E
PA102	56 01 09.3N 021 27 16.5E	TIRIN	56 04 02.2N 020 44 52.2E
PA103	55 56 36.3N 021 40 28.1E	UGFOS	55 46 52.0N 022 08 18.7E
PA104	55 53 12.6N 021 10 17.1E	UPNAN	56 06 27.9N 022 04 35.9E
PA105	55 52 07.8N 020 52 14.3E	PLG	55 57 23.5N 021 05 13.4E

FOR DETAILED FLIGHT PROCEDURES REFER TO AIP EYPAAD 2.22