

STANDARD DEPARTURE CHART  
INSTRUMENT (SID) - ICAO

TRANSITION ALT  
5000

TWR 124.305  
118.305  
ATIS 127.805

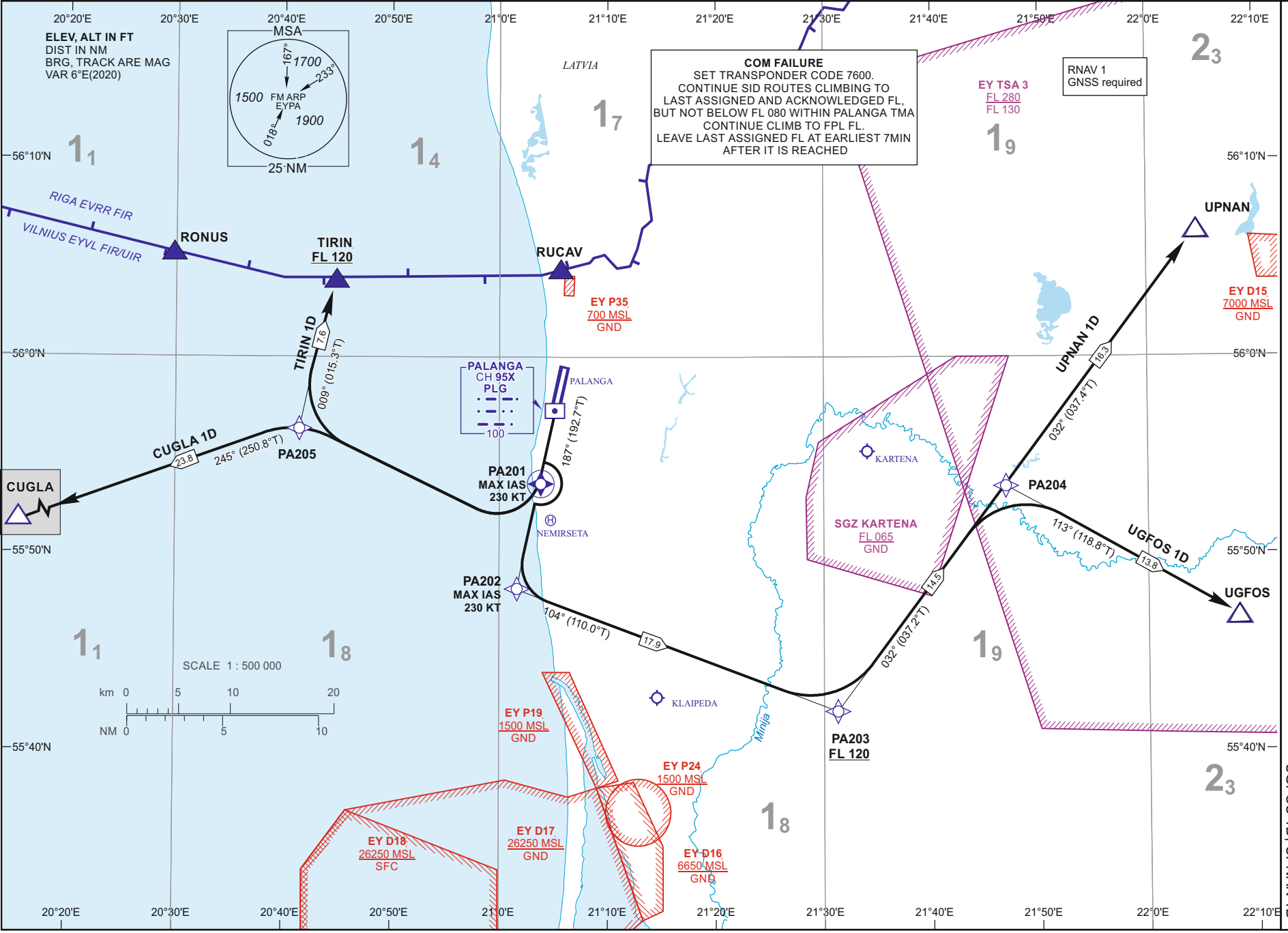
PALANGA (EYPA)  
RNAV RMY 19  
CUGLA 1D, TIRIN 1D,  
UGFOS 1D, UPNAN 1D

Changes:

07 AUG 2025

©2019 ORO NAVIGACIJA

eAIP 2nd Edition



**STANDARD DEPARTURE CHART  
INSTRUMENT (SID) - ICAO**TRANSITION ALT  
5000**PALANGA (EYPA)  
RNAV RWY 19**  
CUGLA 1D, TIRIN 1D,  
UGFOS 1D, UPNAN 1D

## TABULAR DESCRIPTION

**CUGLA 1D** PDG 7.0% REQUIRED DUE TO OPERATIONAL REASONS UNTIL PA205

Serial Number	Path Descriptor	Waypoint Identifier	Fly-over	Course/Track °M(°T)	Magnetic Variation	Distance (NM)	Turn Direction	Altitude (FT)/ Flight level	Speed (KT)	Navigation Specification
001	CF	PA201	Y	187(192.7)	5.9	4.0	—	—	-230	RNAV1
002	DF	PA205	—	—	5.9	—	R	—	—	RNAV1
003	TF	CUGLA	—	245(250.8)	5.9	23.8	—	—	—	RNAV1

**TIRIN 1D** PDG 7.0% REQUIRED DUE TO OPERATIONAL REASONS UNTIL PA205

Serial Number	Path Descriptor	Waypoint Identifier	Fly-over	Course/Track °M(°T)	Magnetic Variation	Distance (NM)	Turn Direction	Altitude (FT)/ Flight level	Speed (KT)	Navigation Specification
001	CF	PA201	Y	187(192.7)	5.9	4.0	—	—	-230	RNAV1
002	DF	PA205	—	—	5.9	—	R	—	—	RNAV1
003	TF	TIRIN	—	009(015.3)	5.9	7.6	—	+FL120	—	RNAV1

**UGFOS 1D** PDG 7.0% REQUIRED DUE TO OPERATIONAL REASONS UNTIL PA202

Serial Number	Path Descriptor	Waypoint Identifier	Fly-over	Course/Track °M(°T)	Magnetic Variation	Distance (NM)	Turn Direction	Altitude (FT)/ Flight level	Speed (KT)	Navigation Specification
001	CF	PA202	—	187(192.7)	5.9	9.8	—	—	-230	RNAV1
002	TF	PA203	—	104(110.0)	5.9	17.9	—	+FL120	—	RNAV1
003	TF	PA204	—	032(037.2)	5.9	14.5	—	—	—	RNAV1
004	TF	UGFOS	—	113(118.8)	5.9	13.8	—	—	—	RNAV1

**UPNAN 1D** PDG 7.0% REQUIRED DUE TO OPERATIONAL REASONS UNTIL PA202

Serial Number	Path Descriptor	Waypoint Identifier	Fly-over	Course/Track °M(°T)	Magnetic Variation	Distance (NM)	Turn Direction	Altitude (FT)/ Flight level	Speed (KT)	Navigation Specification
001	CF	PA202	—	187(192.7)	5.9	9.8	—	—	-230	RNAV1
002	TF	PA203	—	104(110.0)	5.9	17.9	—	+FL120	—	RNAV1
003	TF	PA204	—	032(037.2)	5.9	14.5	—	—	—	RNAV1
004	TF	UPNAN	—	032(037.4)	5.9	16.3	—	—	—	RNAV1

**WAYPOINT COORDINATES**

FIX/POINTS	COORDINATES	FIX/POINTS	COORDINATES
<b>PA201</b>	55 53 53.6N 021 03 49.3E	<b>CUGLA</b>	55 48 48.6N 020 01 29.9E
<b>PA202</b>	55 48 11.8N 021 01 32.4E	<b>TIRIN</b>	56 04 02.2N 020 44 52.2E
<b>PA203</b>	55 42 01.7N 021 31 15.8E	<b>UGFOS</b>	55 46 52.0N 022 08 18.7E
<b>PA204</b>	55 53 32.1N 021 46 50.9E	<b>UPNAN</b>	56 06 27.9N 022 04 35.9E
<b>PA205</b>	55 56 43.4N 020 41 18.0E	<b>PLG</b>	55 57 23.5N 021 05 13.4E

FOR DETAILED FLIGHT PROCEDURES REFER TO AIP EYPAAD 2.22