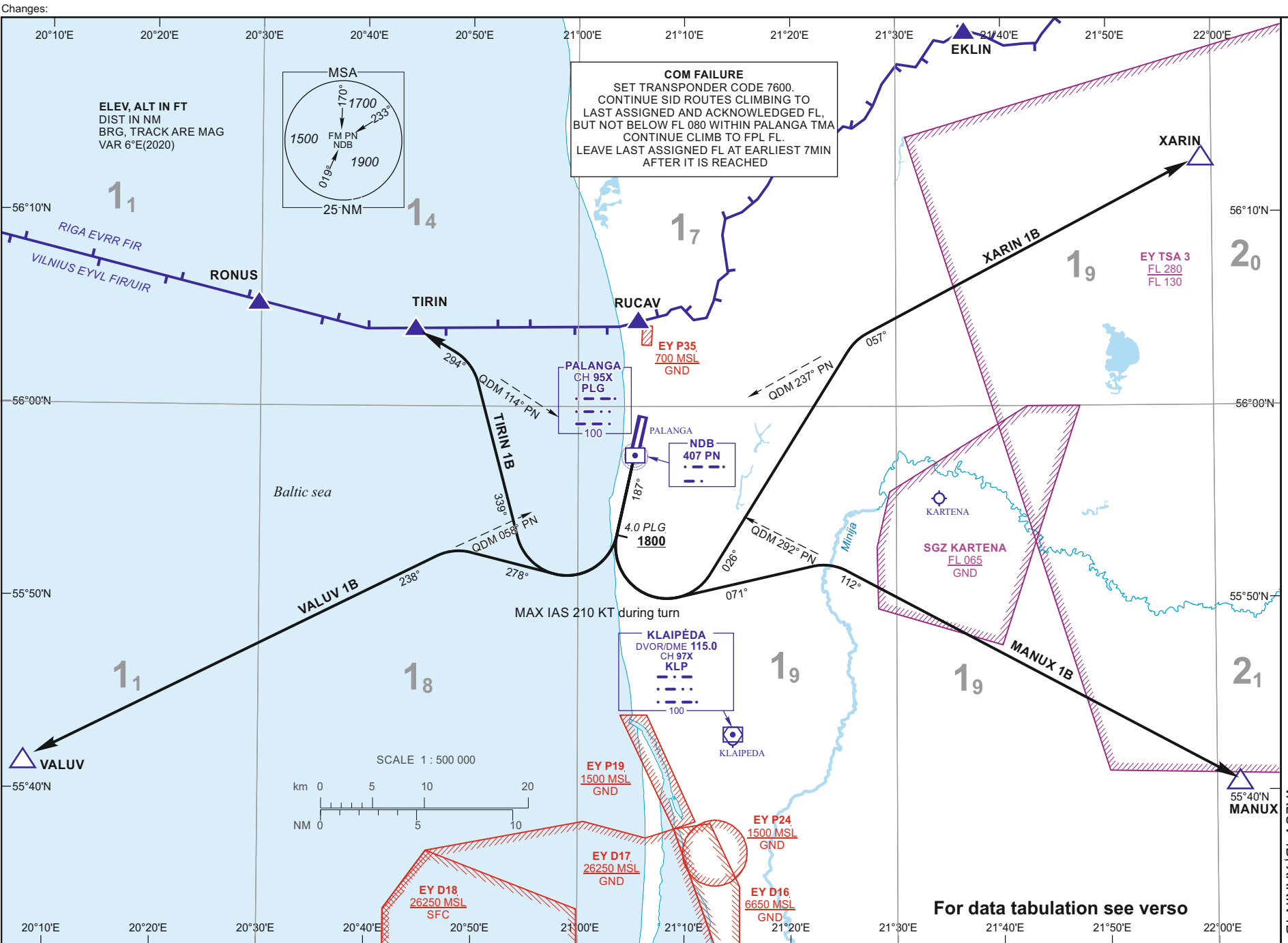


STANDARD DEPARTURE CHART
INSTRUMENT (SID) - ICAO

TRANSITION ALT 5000

TWR 124.305
ATIS 127.805

PALANGA
Rwy 19
MANUX 1B, TIRIN 1B,
VALUV 1B, XARIN 1B



For data tabulation see verso

Changes:
07 AUG 2025

©2019 ORO NAVIGACIJA

eAIP 2nd Edition

**PALANGA
SID RWY 19**

TABULAR DESCRIPTION

STANDARD INSTRUMENT DEPARTURE (SID) ROUTES

SID NAME	ROUTE
MANUX 1B	Climb on RWY track to 4.0 DME PLG (at 1800 FT MSL or above). Turn left (MAX IAS 210 KT) to track 071°. Intercept QDM 292° PN, proceed to MANUX.
TIRIN 1B	Climb on RWY track to 4.0 DME PLG (at 1800 FT MSL or above). Turn right (MAX IAS 210 KT) to track 339°. Intercept QDM 114° PN, proceed to TIRIN.
VALUV 1B	Climb on RWY track to 4.0 DME PLG (at 1800 FT MSL or above). Turn right (MAX IAS 210 KT) to track 278°. Intercept QDM 058° PN, proceed to VALUV.
XARIN 1B	Climb on RWY track to 4.0 DME PLG (at 1800 FT MSL or above). Turn left (MAX IAS 210 KT) to track 026°. Intercept QDM 237° PN, proceed to XARIN.

Remark: 1. After take-off climb to 4000 FT MSL. Unless otherwise specified by ATC.
2. PDG: 6.6%(400 FT/NM) up to 4000 FT MSL due to airspace.

WAYPOINT COORDINATES		
FIX/POINTS	COORDINATES	RADIAL/DISTANCE
MANUX	55 40 34.3N 022 02 08.2E	KLP R088.8/D27.0 ; PLG D36.3
TIRIN	56 04 02.2N 020 44 52.2E	KLP R315.9/D27.0 ; PLG D13.2
VALUV	55 41 31.7N 020 07 58.7E	KLP R262.4/D37.7 ; PLG D36.0
XARIN	56 12 56.9N 021 58 56.6E	KLP R033.4/D39.1 ; PLG D33.9
KLP	55 42 56.1N 021 14 37.4E	
PN	55 57 23.1N 021 05 13.5E	
PLG	55 57 23.5N 021 05 13.4E	

FOR DETAILED FLIGHT PROCEDURES REFER TO AIP EYPA AD 2.22