

STANDARD ARRIVAL CHART  
INSTRUMENT (STAR) - ICAO

TRANSITION ALT  
5000

ATIS  
TWR  
127.805  
124.305  
118.305

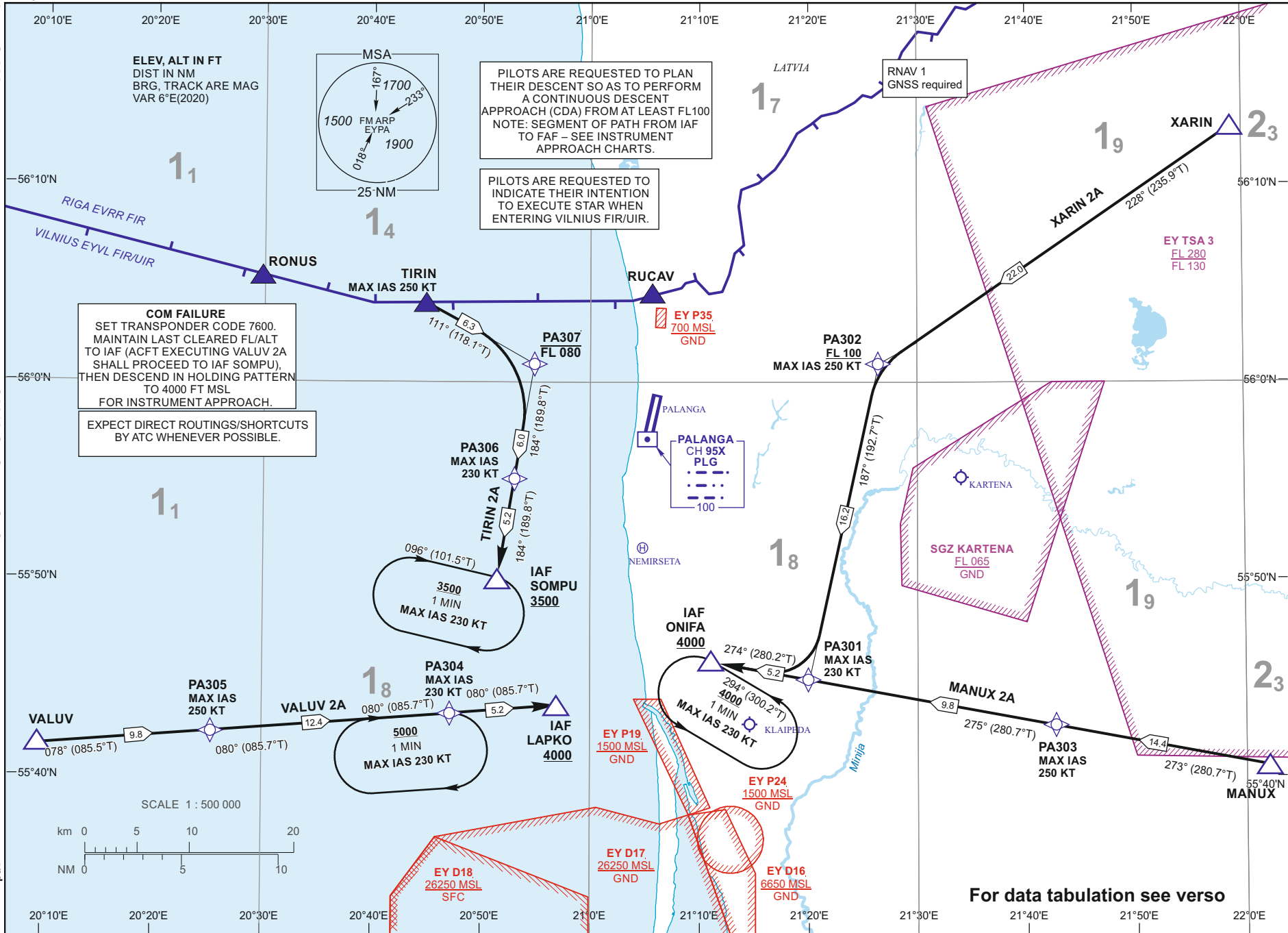
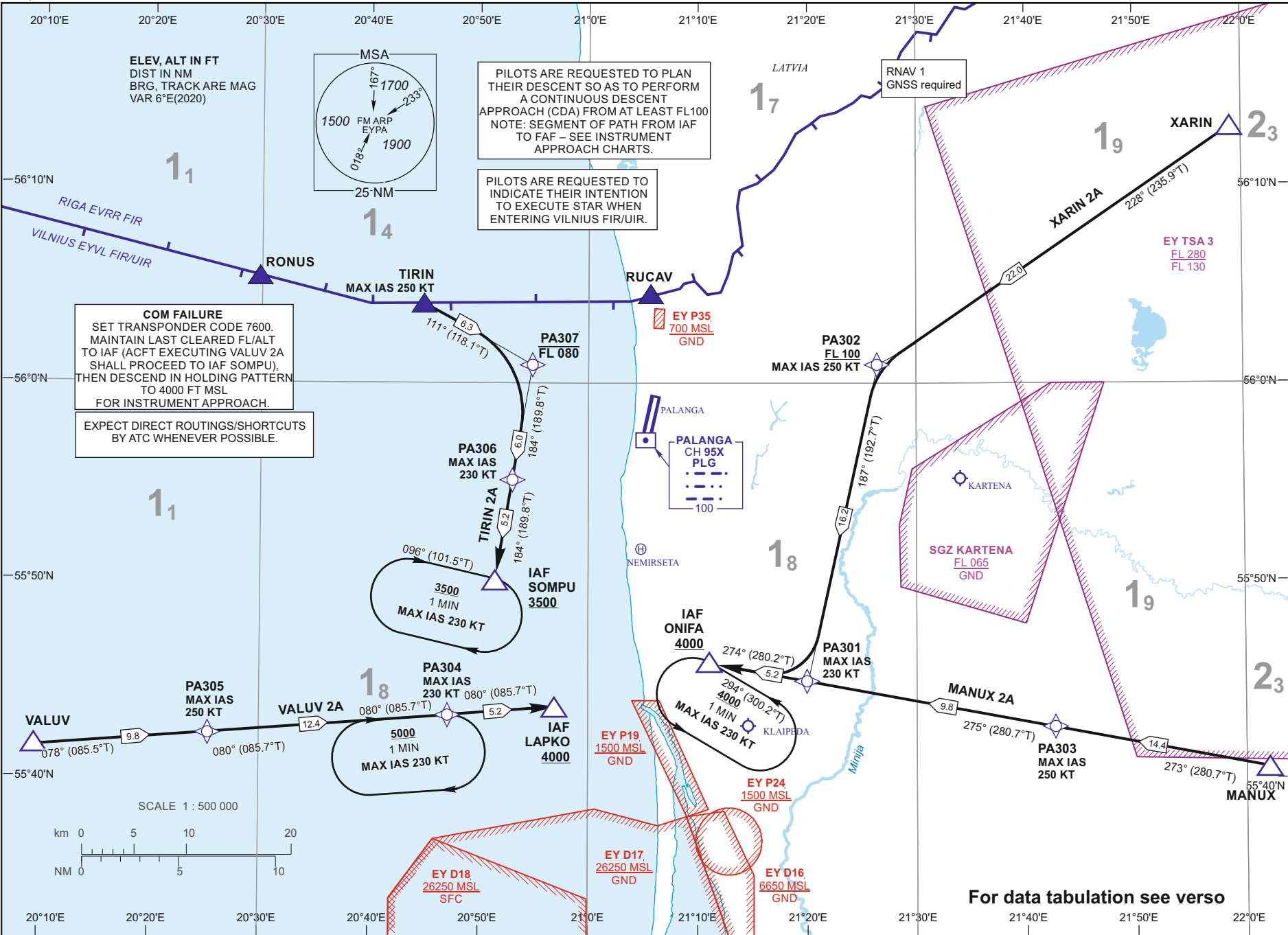
PALANGA (EYPA)  
RNAV RMY 01

Changes:

07 AUG 2025

©2019 ORO NAVIGACIJA

eAIP 2nd Edition



**STANDARD ARRIVAL CHART  
INSTRUMENT (STAR) - ICAO**TRANSITION ALT  
5000**PALANGA (EYPA)  
RNAV RWY 01**  
MANUX 2A, TIRIN 2A,  
VALUV 2A, XARIN 2A

## TABULAR DESCRIPTION

<b>MANUX 2A</b>										
Serial Number	Path Descriptor	Waypoint Identifier	Fly-over	Course/Track °M(°T)	Magnetic Variation	Distance (NM)/ Time	Turn Direction	Altitude (FT)/ Flight level	Speed (KT)	Navigation Specification
001	IF	MANUX	—	—	7.9	—	—	—	—	RNAV1
002	TF	PA303	—	273(280.7)	7.9	14.4	—	—	-250	RNAV1
003	TF	PA301	—	275(280.7)	5.9	9.8	—	—	-230	RNAV1
004	TF	ONIFA	—	274(280.2)	5.9	5.2	—	+4000	—	RNAV1

<b>TIRIN 2A</b>										
Serial Number	Path Descriptor	Waypoint Identifier	Fly-over	Course/Track °M(°T)	Magnetic Variation	Distance (NM)/ Time	Turn Direction	Altitude (FT)/ Flight level	Speed (KT)	Navigation Specification
001	IF	TIRIN	—	—	7.6	—	—	—	-250	RNAV1
002	TF	PA307	—	111(118.1)	7.6	6.3	—	-FL080	—	RNAV1
003	TF	PA306	—	184(189.8)	5.9	6.0	—	—	-230	RNAV1
004	TF	SOMPU	—	184(189.8)	5.9	5.2	—	+3500	—	RNAV1

<b>VALUV 2A</b>										
Serial Number	Path Descriptor	Waypoint Identifier	Fly-over	Course/Track °M(°T)	Magnetic Variation	Distance (NM)/ Time	Turn Direction	Altitude (FT)/ Flight level	Speed (KT)	Navigation Specification
001	IF	VALUV	—	—	7.3	—	—	—	—	RNAV1
002	TF	PA305	—	078(085.5)	7.3	9.8	—	—	-250	RNAV1
003	TF	PA304	—	080(085.7)	5.9	12.4	—	—	-230	RNAV1
004	TF	LAPKO	—	080(085.7)	5.9	5.2	—	+4000	—	RNAV1

<b>XARIN 2A</b>										
Serial Number	Path Descriptor	Waypoint Identifier	Fly-over	Course/Track °M(°T)	Magnetic Variation	Distance (NM)/ Time	Turn Direction	Altitude (FT)/ Flight level	Speed (KT)	Navigation Specification
001	IF	XARIN	—	—	8.0	—	—	—	—	RNAV1
002	TF	PA302	—	228(235.9)	8.0	22.0	—	+FL100	-250	RNAV1
003	TF	PA301	—	187(192.7)	5.9	16.2	—	—	-230	RNAV1
004	TF	ONIFA	—	274(280.2)	5.9	5.2	—	+4000	—	RNAV1

## HOLDINGS IDENTIFICATION

Holding fix	Geographical coordinates	Inbound track °M(°T)	Magnetic Variation	Outbound distance (NM)/ Time	Turn Direction	Minimum/Maximum holding altitude (FT)/Flight level	Speed (KT)
ONIFA	55 45 51.4N 021 11 02.4E	294(300.2)	5.9	1 min	L	+4000	-230
PA304	55 43 16.4N 020 47 05.2E	080(085.7)	5.9	1 min	R	+5000	-230
SOMPU	55 50 04.5N 020 51 23.2E	096(101.5)	5.9	1 min	R	+3500	-230

## WAYPOINT COORDINATES

FIX/POINTS	COORDINATES	FIX/POINTS	COORDINATES	FIX/POINTS	COORDINATES
PA301	55 44 56.8N 021 20 06.1E	PA306	55 55 08.8N 020 52 56.7E	SOMPU	55 50 04.5N 020 51 23.2E
PA302	56 00 43.4N 021 26 23.7E	PA307	56 01 04.5N 020 54 46.5E	TIRIN	56 04 02.2N 020 44 52.2E
PA303	55 43 11.9N 021 37 10.8E	LAPKO	55 43 39.9N 020 56 15.3E	VALUV	55 41 31.7N 020 07 58.7E
PA304	55 43 16.4N 020 47 05.2E	MANUX	55 40 34.3N 022 02 08.2E	XARIN	56 12 56.9N 021 58 56.6E
PA305	55 42 18.8N 020 25 14.4E	ONIFA	55 45 51.4N 021 11 02.4E	PLG	55 57 23.5N 021 05 13.4E

FOR DETAILED FLIGHT PROCEDURES REFER TO AIP EYPAAD 2.22