



LIETUVOS RESPUBLIKA

Tel.	+370 706 94 613	AB „ORO NAVIGACIJA“	AIP SUP: 018/2024
AFS:	EYVNYOYX	Oro navigacijos informacijos skyrius	Galioja nuo: 11-Oct-2024
URL:	www.ans.lt	Balio Karvelio g. 25	iki:
El.p.	ais@ans.lt	02184 Vilnius, Lietuva	Paskelbtas: 10-Oct-2024

S 018. KAUNO AERODROMO ŠIAURINIO PERONO REKONSTRUKCIJA**Pakeičia AIP SUP 014/2024****Įtraukia NOTAM A3535/24**

Kauno aerodrome vyksta šiaurinio perono rekonstrukcijos darbai. Šiame AIP papildyme pateikiama laikinai pakeista Kauno aerodromo eismo ir orlaivių stovėjimo aikštelių schema.

Nuo 2024 m. spalio 11 d. įsigalioja šie pakeitimai:

1. Pakeistas riedėjimo maršruto P aprašymas
2. Pakeisti riedėjimo maršrutų ribojimai
3. Pakeisti stovėjimo aikštelių duomenys
4. Pakeistas manevravimo laukas ir ATC paslaugų riba
5. Pridėta darbų zona
6. Riedėjimo maršrutas U, pažymėtas balta punktyrine linija, skirtas tik patekimui į angarus
7. Atnaujintos TWY B centro linijos koordinatės
8. Atnaujinta legenda
9. Pridėta tarpinė laukimo vieta P1 nuo TWY B iki perono

Bet kokie šio AIP SUP pakeitimai bus paskelbti NOTAM.

Priedas. Aerodromo eismo ir orlaivių stovėjimo aikštelių schema

-PABAIGA-

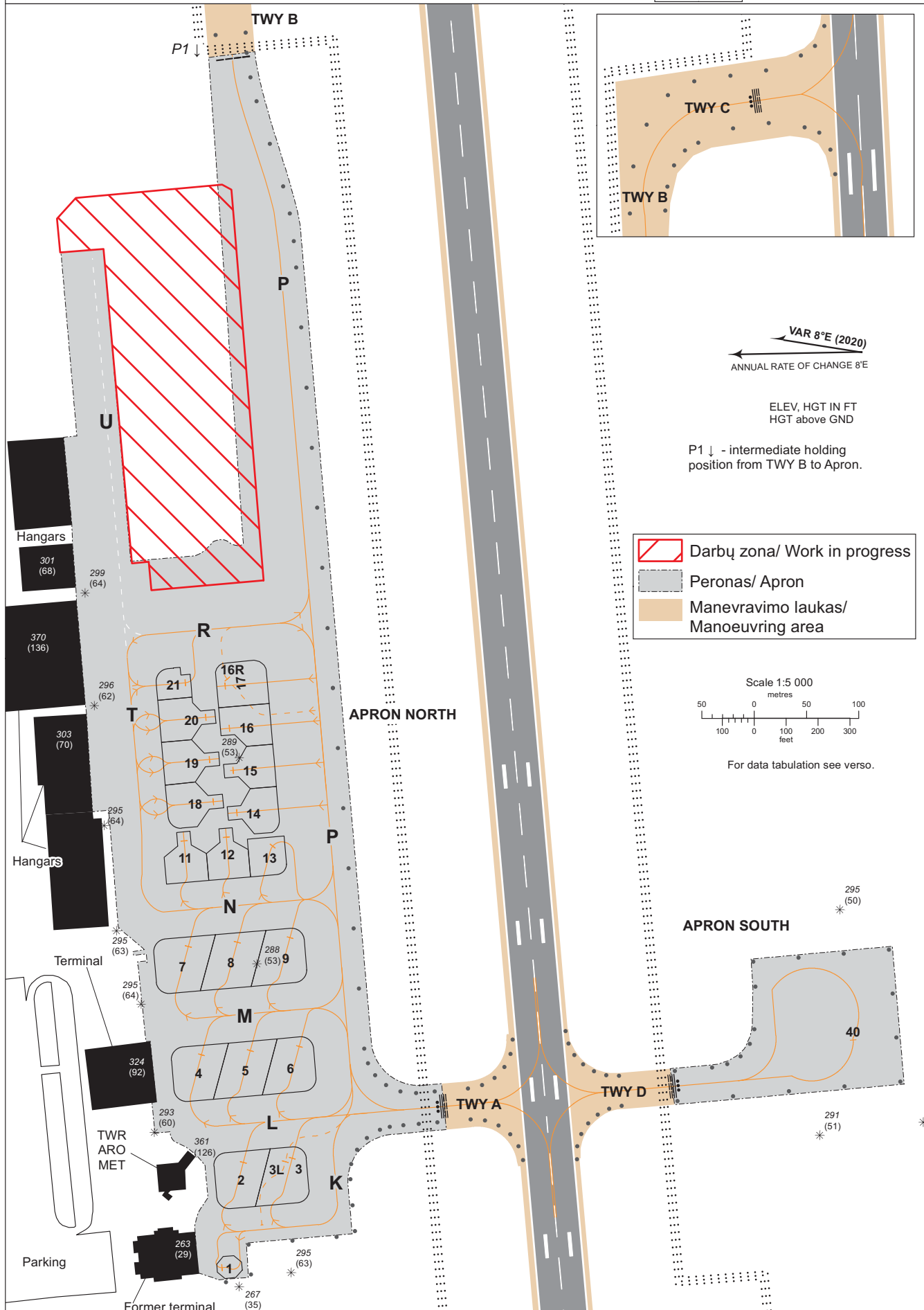
SPECIALUSIS TUŠČIAS PUSLAPIS

AERODROME GROUND MOVEMENT AND PARKING CHART - ICAO

APRON ELEV 243

TWR 124.205
118.505
ATIS 129.055

KAUNAS



AERONAUTICAL DATA TABULATION				
ACFT STANDS				
Stand	Coordinates	Bearing Strength	Max wing span, M	Remarks
1	54 57 57.86N 024 04 15.56E	5700 MTOM (kg)	15	Self manoeuvring (MTOW 5700 kg)
2	54 57 57.50N 024 04 20.33E	120/R/B/W/T	36	Self manoeuvring
3	54 57 56.19N 024 04 20.38E	66/R/B/W/T	36	Self manoeuvring
3L	54 57 56.30N 024 04 20.90E	66/R/B/W/T	65	Self manoeuvring. For CAT D and CAT E ACFT parking stands 1, 2 and 3 have to be empty.
4	54 57 58.80N 024 04 26.05E	80/R/B/W/T	36	Self manoeuvring
5	54 57 57.36N 024 04 26.19E	99/R/B/W/T	36	Self manoeuvring
6	54 57 55.97N 024 04 26.32E	120/F/B/X/T	36	Self manoeuvring
7	54 57 59.30N 024 04 31.80E	120/R/B/W/T	36	Self manoeuvring
8	54 57 57.80N 024 04 32.00E	120/F/B/X/T	36	Self manoeuvring
9	54 57 56.10N 024 04 32.20E	120/F/B/X/T	36	Self manoeuvring
11	54 57 59.20N 024 04 37.60E	83/F/B/X/T	36	Taxi in/Push back
12	54 57 57.90N 024 04 37.80E	120/F/B/X/T	36	Taxi in/Push back
13	54 57 56.60N 024 04 37.60E	120/F/B/X/T	24	Self manoeuvring
14	54 57 57.10N 024 04 40.00E	118/F/B/X/T	36	Taxi in/Push back
15	54 57 57.20N 024 04 42.30E	35/R/B/X/T	36	Taxi in/Push back
16	54 57 57.30N 024 04 44.60E	35/R/B/X/T	36	Taxi in/Push back
16R	54 57 57.70N 024 04 46.70E	35/R/B/X/T	52	Self manoeuvring. Parking stands 16 and 17 have to be empty.
17	54 57 57.50N 024 04 46.80E	35/R/B/X/T	36	Taxi in/Push back
18	54 57 58.90N 024 04 40.50E	35/R/B/X/T	36	Taxi in/Push back
19	54 57 59.00N 024 04 42.70E	35/R/B/X/T	36	Taxi in/Push back
20	54 57 59.00N 024 04 45.00E	35/R/B/X/T	36	Taxi in/Push back
21	54 57 59.20N 024 04 46.90E	35/F/B/X/T	24	Self manoeuvring
40	54 57 38.59N 024 04 27.71E	79/F/B/X/T	65	Self manoeuvring
TAXIING ROUTES				
Route	Description	Max wing span, M	ACFT stand and ACFT facing direction	
K	From end of TWY A to eastern part of ACFT stand 1.	65	2, 3, 3L - facing east; 1 - facing north	
L	From end of TWY A to western part of ACFT stand 4.	36	4, 5, 6 - facing east	
M	From taxiing route P to western part of ACFT stand 7.	36	7, 8, 9, - facing east	
N	From taxiing route P to intersection with taxiing route T.	36	11, 12, 13 - facing east	
P	The main taxiing route starts from the beginning of TWY A up to the TWY B. From taxiing route P goes all other taxiing routes.	65	14, 15, 16, 16R, 17 - facing north	
R	From taxiing route P to intersection with taxiing route T.	52	NIL	
T	From intersection with taxiing routes R/U to intersection with taxiing route N.	36	18, 19, 20, 21 - facing south	
U	From intersection with taxiing routes R/T to eastern part of APRON NORTH.	36	NIL	
Restrictions				
K	Taxiing of CAT D and CAT E aircraft allowed only to parking stand 3L, parking stands 1, 2 and 3 shall be empty. Taxiing is prohibited when ACFT stand 3L is occupied with ACFT CAT D or E.			
P	Taxiing of CAT E aircraft allowed only when parking stands 6 and 9 are empty.			
R	Taxiing of CAD D allowed only from 16R stand to taxiing route P.			
U	Movement of ACFT to/from hangar is allowed only by push back tug.			
TAXIWAYS				
TWY	Width (M)	Bearing Strength	Surface	Centre Line Points
A	23	79/F/B/X/T	Asphalt-Concrete	54 57 48.81N 024 04 24.55E 54 57 49.87N 024 04 24.39E 54 57 51.19N 024 04 24.18E 54 57 52.80N 024 04 23.92E
B	23	66/F/B/X/T	Asphalt-Concrete	54 57 58.68N 024 05 43.80E 54 57 58.32N 024 05 32.28E 54 57 57.60N 024 05 20.40E
C	23	66/F/B/X/T	Asphalt-Concrete	54 57 52.95N 024 05 47.82E 54 57 54.00N 024 05 47.70E 54 57 55.30N 024 05 47.50E 54 57 57.20N 024 05 47.20E 54 57 58.83N 024 05 43.91E
D	23	79/F/B/X/T	Asphalt-Concrete	54 57 47.40N 024 04 24.74E 54 57 46.31N 024 04 24.91E 54 57 44.21N 024 04 25.22E 54 57 40.48N 024 04 25.76E